

# Sailing Instructions – Club Racing 2009

1. The Organising Authority is the Royal Cornwall Yacht Club

## 2. RULES

- 2.1. The Club Racing will be governed by the rules as defined in the Racing Rules of Sailing 2009- 2012 (RRS) and the RCYC Notice of Race – Club Racing 2009.
- 2.2. Class Rules for the applicable classes will apply
- 2.3. For IRC rated boats, the IRC Rules parts 1,2 and 3 will apply
- 2.4. For sportboats, the SBR rule will apply
- 2.5. The RYA Prescriptions will apply
- 2.6. ISAF Category 5 Special Regulations for inshore races applicable in Paragraph 15.2.6 of the Notice of Race will apply
- 2.7. **Local Rules:** –

### 2.7.1. Racing inside Mooring Areas

After the preparatory signal for the appropriate class, no yacht shall sail inside moorings, and to this end a continuous straight line between the outer line of mooring buoys (whether a vessel is attached or not) on both sides of Falmouth Harbour will be classed as a continuous obstruction. This ruling excludes Frigate & Caldy buoys. The chart in Appendix B is a guide to this requirement.

### 2.7.2. Commercial Shipping

2.7.2.1 Commercial vessels constricted by their draft or size form moving exclusion zones which competitors are to treat as obstructions. The exclusion zone extends to 100 metres on all sides of the vessel and includes tugs, pilot boats and safety boats escorting the vessel. No competitor is to enter the exclusion zone and if becalmed is to use their engine or other means of propulsion to move out of the way. This should only be sufficient to move out of the exclusion zone and the course steered and distance traveled should be the shortest distance to move the competitor clear of the commercial vessel and its exclusion zone. This changes RRS 42.

2.7.2.2 Competitors who unnecessarily interfere with commercial shipping bring the sport into disrepute and risk protest by the Race Committee under RRS 69 (Gross Misconduct). A complaint by the Harbour Authority will initiate a protest by the Race Committee.

## **St Mawes Cardinal Mark**

2.7.3.1 Competitors shall at all times keep to the seaward side of St Mawes cardinal mark (Lugo Rock)

### **2.7.3. Dive Boats**

A 30 metre zone around a dive boat flying code flag A, an orange pillar mark indicating a diver beneath the surface and a diver on the surface are obstructions. A boat shall not enter the 30 metre zone.

### **2.7.4. Shipping Movements**

2.7.5.1 A white flag may be flown by the committee boat to indicate a commercial shipping movement.

### **2.7.5. VHF Radio Use by Competitors**

2.7.6.1 The Race Committee will use VHF marine Channel 72 to transmit course and race start information. From the time of the first course broadcast at 1800 to the completed start of the last class to start no boat shall broadcast on channel 72 other than for reasons of an emergency requiring immediate assistance.

## **3. Notices to competitors and Changes to Sailing Instructions**

3.1 Notices to competitors will be posted on the RCYC "Sailing" notice board in the main hall at the RCYC.

3.2 Any changes to sailing instructions will be posted by 1300 on the day that they will take effect

## **4. Signals made ashore**

4.1. Signals made ashore will be displayed on the flag staff at the RCYC. In alteration of RRS "Race Signals" when flag AP is displayed ashore, "1 minute" is replaced with "not less than 60 minutes".

## **5. Schedule of races**

5.1. The schedule of races is as listed in Appendix A

## **6. Class Flags**

6.1 Class flags shall be flown from the backstay or mainsail leach with the exception of classes V and D who are not required to display a class flag.

## **7. Courses**

7.1 Courses will be set from the pre-set courses in Appendix C, or using Racing Marks listed in Appendix D.

7.2 All courses will be broadcast at 1800 hours and repeated at 1805 hours. Individual Class courses will be repeated 1 minute after the preparatory signal for each class.

8. **Marks** will be as listed in Appendix C to these Sailing Instructions.

9. **The Start**

9.1.

		<b>Class</b>	<b>Start Time</b>
	Warning signal F class	18.05	
	Preparatory signal F class	18.10	
F	Sports Boats		18.15
A	Handicap yachts		18.20
J	J24		18.25
V	Sunbeams		18.30
E & Q	PY and White Sail		18.35
D	St Mawes One Design		18.40
M	Multihills		18.45

9.2. Note: If there are insufficient entries in a class to justify a class start these start times may be changed. In the event that they are so changed, a change to these Sailing Instructions will be made as per 3.1 and 3.2 of these SI's

9.3. **Starting Races**

9.3.1 RRS 26 shall not apply.

9.4. Starting Line will be between a mast displaying an orange flag on a Committee boat within the Carrick Roads, and an orange buoy.

9.5. After rounding the first mark, boats shall not pass through the starting line.

9.6. All boats shall keep clear of the starting line until their warning signal has been made.

9.7 A boat attempting to start later than 4 minutes after her starting signal will be scored Did Not Start. This changes rule A4.1.

9.8 If any part of a boat's hull crew or equipment is on the course side of the starting line one minute before her starting signal and she is identified the race committee may attempt to broadcast either her boat name or sail number on VHF Channel 72.

10. **General Recalls**

10.1. RRS rule 29.2 & the RRS flag definitions are changed as follows. Flag First Substitute will be displayed with two sound signals. First Substitute will be flown until all boats have returned but not later than 4 minutes after the Starting Signal which ever is earlier. The Starting Signal of the last class to start in that group start sequence will be the Preparatory Signal for the new start for the recalled class.

10.2. In the event of a General Recall for more than one class, the sequence of the starts of recalled classes would follow the start order detailed in these sailing instructions.

10.3 In addition to the flag and sound signals, as soon as possible after the recalled start a broadcast may be made on Channel 72 to announce the General Recall for that start.

## 11. Postponement & Abandonment Signals

11.1 The RRS flag definitions are changed as follows. The Preparatory Signal will be made 1 minute after the removal of the postponement or abandonment signal unless the race is postponed again or abandoned.

## 12. The Finish

12.1 The finishing line will be a 'Harbour Finish' in the course announcements or by a course board 'HF' displayed at the start as part of a course. The 'Harbour Finish' will be between a Committee Boat the Eastern end of the Northern arm. This changes RRS 32.2 and RRS flag definitions.

12.2 An alternate finishing line may be used. This is a transit between the RCYC flagpole and a triangle on the Clubhouse, which is limited at its inner end by a flag buoy displaying IC Flag '1' designated as 'Club Finish' in the announcements. Radio broadcast will be made to competitors each time a Club finish is used.

## 13. Penalties

13.1 For Sunbeam class races only, rules 44.1 and 44.2 are amended for an incident exclusively between one or more Sunbeams by substituting "Two turns" with "One Turn to include 1 tack and 1 gybe".

## 14. Time Limits

14.1 Rule 35 is altered as follows. If one yacht finishes within the prescribed time limit the race shall be valid for all yachts in the same class finishing within the Time Limit Extension.

<b>RACE SERIES</b>	<b>TIME LIMIT</b>	<b>TIME LIMIT EXTENSION</b>
First Points Series & Stewards Cup	20:30	30 minutes
Second Series & Ladies Race	21:00	30 minutes
Third Points Series	20:45	30 minutes

## 15. Protests

15.1 The protest time is 1 hour after the finishing line of the last boat in the last race for that day's finishes.

- 15.2 Protest forms are available from the Sailing Office at the RCYC. Protests shall be delivered there within the protest time limit.
- 15.3 Notices will be posted within 30 minutes of the expiry of protest time limit to inform competitors of hearings in which they are parties or named as witnesses. Hearings will be held at the RCYC as soon as possible on the same day.

## **16. Scoring**

- 16.1 The low points scoring system of RRS appendix A will apply.
- 16.2 3 races are required to be completed to constitute a Points Series.
- 16.3 When 3 races have been completed, a boat's Points Series score will be the total of her race scores.
- 16.4 When more than 3 races have been completed, a boat's Points Series score will be the total of her race scores excluding her worst score
- 16.5 A skipper whose boat does not take part in a race for which he is acting as a member of the Race Team shall be awarded points for that race equivalent to his average for the series concerned less 1. This changes RRS A4.1

## **17. PY Handicaps**

The Sailing Committee may allocate a Club handicap number to a boat that does not have a primary or secondary PY. Boats racing for the first time where there is no handicapping data available will be given a Trial handicap which may be altered after each race until there is sufficient data available to issue a Club handicap number.

The Sailing committee may at its absolute discretion change a PY handicap under which a boat has been entered. Any change so made shall be discussed with the owner and advised to the boat before the individual race to which it shall apply and shall not be retrospective.

## **18. Retirement**

A boat that retires from a race shall notify the race committee within 60 minutes after finishing or retiring. Retirements may be reported to the race committee by radio on Channel 72 or by phone to the Sailing Office 01326 317190. Competitors not adhering to this procedure may be subject to protest from the race committee and scored DNE (non-discardable disqualification). This changes rule A4. 1

## **19. Crew Limits**

IRC crew limits shall only apply to a boat rated as a One-Design. When her IRC crew limit exceeds her one-design class rules limit she shall comply with her Class limit

## **20. Safety Regulations**

- 20.1 All yachts shall carry the equipment specified under ISAF Category 5 – Part B portable equipment and shall take note of Category 5 – Part C recommendations.
- 20.2 Where Class rules require a higher level of safety equipment all yachts shall in addition also comply with their respective Class safety rules.
- 20.3 Multi-hulls shall in addition also comply with MOCRA Safety Rules.
- 20.4 All boats racing in Falmouth Bay shall carry, in addition to the equipment specified above, the following items:
  - i) No 2 orange flares
  - ii) Foghorn
  - iii) Chart of Falmouth Bay (which may be interpreted as the Club racing chart)
  - iv) First Aid Kit
- 20.5 All competitors shall carry a VHF radio, waterproofed hand held or internal, full working order.
- 20.6 All equipment should be regularly maintained and serviced in date accordance with the manufacturers' recommendations.

## **21. Prizes**

- 22.1 Three prizes will be awarded for a series or races with six or more boats, two prizes for a series or races with four or five boats entered and one prize for series or races with three or less boats entered.

## **22. Decision to Race**

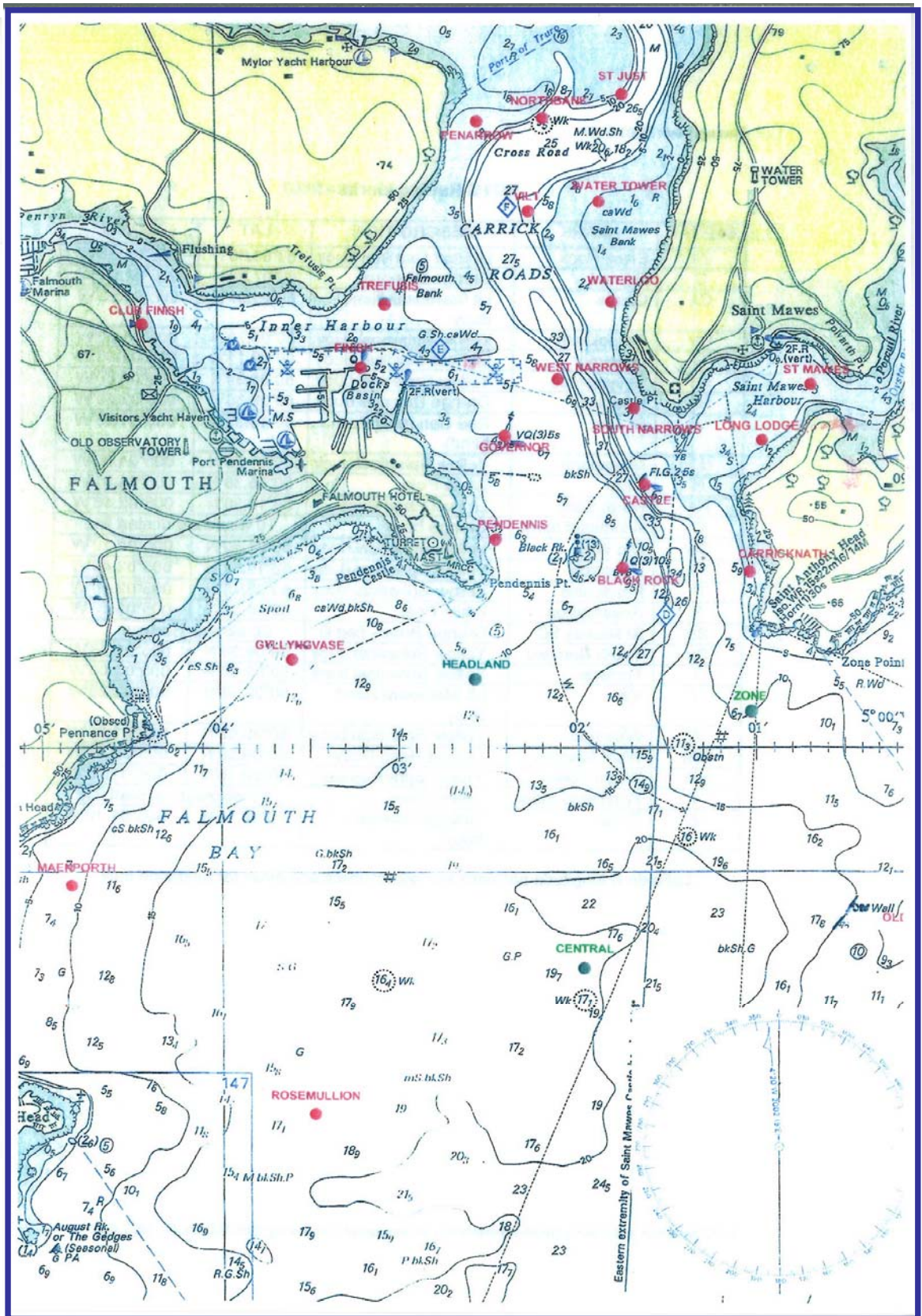
The responsibility for a boats decision to participate in a race or to continue racing is hers alone. Boats participating in Club Racing do so entirely at their own risk.

## Appendix A – Race Programme

### 2009 SAILING CALENDAR

<b>Date</b>	<b>Series / Event</b>	
20.03.09	Race Briefing RCYC 1900hrs	
03.04.09	First Point Series	Race 1
10.04.09	First Point Series	Race 2
17.04.09	First Point Series	Race 3
24.04.09	First Point Series	Race 4
01.05.09	First Point Series	Race 5
02.05.09	COGS Race	
08.05.09	First Point Series + Prizegiving	Race 6
15.05.09	Second Points series	Race 1
22.05.09	Second Point Series	Race 2
29.05.09	Trinity Race Start	
31.05.09	Trinity Race Finish	
29.05.09	Stewards Cup	
05.06.09	Second Point Series	Race 3
12.06.09	Second Point Series	Race 4
13 – 15.06.09	Sunbeam 85 <sup>th</sup> Anniversary Championships	
19.06.09	Second Point Series	Race 5
23-28.06.09	SB3 National Championships	
26.06.09	Second Point Series + Prizegiving	Race 6
03.07.09	Challenge Cups	
04-11.07.09	Dragon SW Championships + Edinburgh Cup	
10.07.09	Third Point Series	Race 1
17.07.09	Third Point Series	Race 2
24.07.09	Third Point Series	Race 3
31.07.09	Third Point Series	Race 4
07.08.09	Third Point Series	Race 5
08.08.09	Classics Regatta	
09-15.08.09	Falmouth Week	
13.08.09	RCYC Regatta Day	
21.08.09	Third Point Series + Prizegiving	Race 6
28.08.09	Ladies Race	
04.09.09	Commodores' Charity Race	
13.09.09	RCYC / HRSC Autumn Spirit	
18.09.09	RCYC / FSC Autumn Pursuit	
20.09.09	RCYC / HRSC Autumn Spirit	
20-21.09.09	J24 Autumn Cup	
22.09.09	RCYC / FSC Autumn Pursuit	
27.09.09	RCYC / HRSC Autumn Spirit	
04.10.09	RCYC / HRSC Autumn Spirit	
11.10.09	RCYC / HRSC Autumn Spirit	

# Appendix B – MARKS AND BUOYS Chart



## Appendix C-COURSES

### RCYC Courses 2009

Note: The windward mark (Wx) is an orange cone inflatable buoy.

Group 1        Northerly winds.  
The Committee Boat will be in the vicinity of Governor.

1	Wxp CF	2.0
2	Wxp Pp Gp CF	3
3	Wxp Tp Wp Vp CF	3.5
4	Wxp Tp Pp Gp CF	4
5	Wxp Tp WNp Jp WTs CF	5
6	Wxp Tp Wp Jp SNs CF	5.5
7	Wxp Tp CAp Jp SNs CF	7
8	Wxp Tp BRp NBp CF	7.5
9	Wxp Pp NBp Pp WNp CF	7.5
10	Wxp BRp Vp BRp WNp CF	9.5
11	Wxp Cp Vp CF	10
12	Wxp Rp Cp WNp CF	10.5
13	RO's Choice	

Group 2.        NorthEasterly winds.  
The Committee Boat will be between Trefusis and Governor.

1	Wxp Vp CF	3
2	Wxp Tp WTs CF	4
3	Wxp Vp Tp Vp CF	4
4	Wxp Pp Llp CF	6
5	Wxp Tp Hdp Llp CF	7
6	Wxp Vp GYp CAp CF	7
7	Wxp Tp SNp Pp Llp CF	6.5
8	Wxp Tp GYp CAp CF	7
9	Wxp Tp Gp Wp Gp SNp CF	6.5
10	Wxp Tp Mp CAp CF	10
11	Wxp Vp Rp Zp CF	10
12	Wxp Vp Cs Zp CF	8.5
13	Wxp Vp Mp CAp CF	9.5
14	Wxp Tp Pp Llp CF	6.5
15	Wxp Tp Hdp Llp Pp Cap CF	9
16	Wxp Tp Rp Zp CF	11
17	RO's Choice	

Group 3. Easterly winds  
The Committee Boat will be in the vicinity of Trefusis

1	Wxp CF	2.5
2	Wxp Vp CF	3
3	Wxp Jp CF	3.5
4	Wxp Vp Gp SNp CF	4.5
5	Wxp Tp Wxp Tp CF	4.5
6	Wxp Tp Gp LLp CF	6.5
7	Wxp PAp Gp LLp Vp CF	8
8	Wxp Tp Wp Jp Vp Jp CF	7
9	Wxp NBp Gp LLp CF	6.5
10	Wxp Vp Tp Gp LLp Vp CF	7
11	Wxp Tp Wp Tp Wp Tp Wp CF	8
12	Wxp Vp GYp Zp CF	8
13	Wxp Tp CNs Ps CNs BRs CF	8
14	Wxp Tp GYp Zp CF	8
15	Wxp Vp BRs GYp Zp LLp CF	9.5
16	Wxp Vp GYp Zp Ps CNs BRs CF	11
17	Wxp Vp Mp OWp CF	12
18	RO's Choice	

Group 4. Southeasterly winds.  
The Committee Boat will be in the vicinity of Trefusis

1	Wxp WNp CF	2
2	Wxp Vp CF	3
3	Wxp Wp CF	3
4	Wxp WTp Wxp Tp CF	4
5	Wxp SNs CNp CF	5
6	Wxp CAs Zs WNp CF	7
7	Wxp Tp Wxp WNp CF	6
8	Wxp WNp Tp Gp CNp CF	7
9	Wxp Wp Tp BRs CF	6
10	Wxp PAs LLs CF	6.5
11	Wxp CAs Zs Wp CF	5
12	Wxp Vp Tp CAs LLs BRs CF	8
13	Wxp Vp Tp CNp Wp CF	8
14	Wxp Tp CNp Tp Gp WNp CF	9
15	Wxp SNs OWs Tp CF	9
16	Wxp SNs Zs Ms CF	10
17	Wxp SNs OWs HDs Tp CF	9
18	Wxp SNs BRs GYp Cp GYp CF	12
19	RO's Choice	

Group 5. Southerly winds

The Committee Boat will be in the vicinity of Vilt, Wx will be approx 1mile south.

1	Wxp SNp CF	3.5
2	Wxp Vs Gs CF	4.5
3	Wxp WNp Ts Ws CF	5
4	Wxp Vs BRs CF	5.5
5	Wxp NBp Wxp WNp CF	6
6	Wxp Js BRs CF	6
7	Wxp WNp BRs CF	6.5
8	Wxp WNp Ts Js CAs CF	7
9	Wxp Ws GYs Hp SNp CF	8
10	Wxp WTs Cs WNp CF	9
11	Wxp Ws Cs GYs WNp CF	9
12	Wxp Ws Cs Rs CF	10
13	Wxp Ws Cs BRs Cs CF	11
14	RO's Choice	

Group 6. South Westerly

The Committee Boat will be in the vicinity of Waterloo

1	Wxp WNs CF	5
2	Wxp SNp Vp CF	4.5
3	Wxp SNp Jp CF	5.5
4	Wxp Gp NBp Tp CF	6
5	Wxp Gp Jp Tp Jp CF	8
6	Wxp Gp Jp Tp Vp CF	7
7	Wxp LLs BRs LLs BRs CF	7
8	Wxp BRs GYs Wp CF	8
9	Wxp BRs GYs CNp Wp CF	8.5
10	Wxp Ms SNp CF	8
11	Wxp Gp Jp Tp Vp Tp Vp CF	9
12	Wxp BRs Ms Wp CF	9
13	Wxp Ms CNp HDs CF	11
14	Wxp BRs Ms SNp CF	10
15	Wxp CAs Rs Wp CF	10.5
16	RO's Choice	

Group 7. Westerly winds.  
The Committee Boat will be in the vicinity of Waterloo.

1	Wxp CF	1.5
2	Wxp Ws Tp Ws CF	4.5
3	Wxp Gp WNp CF	3.5
4	Wxp Gp CAp WNp CF	4.5
5	Wxp Gp NBp CF	5
6	Wxp Gp Vs Ws CF	5
7	Wxp Gp NBp Tp Ws CF	7
8	Wxp Gp LLp Gp LLp CF	7
9	Wxp CNs Ps CNs BRs CF	7.5
10	Wxp BRs GYs SNp CF	7
11	Wxp CNs GYs WNp CF	8
12	Wxp CNs Ps Vs Ws CF	8
13	Wxp Zs GYs WNp CF	8
14	Wxp OWs Ms BRs SNp CF	12
15	RO's Choice	

Group 8. NorthWesterly winds.  
The Committee Boat will be in the vicinity of Waterloo.

1	Wxp CF	2
2	Wxp WNs CF	3
3	Wxp WNs Gs CF	3
4	Wxp SNp PAp CF	6
5	Wxp CNs SNp CF	6
6	Wxp LLs Pp BRp CF	6
7	Wxp Wp Wxp CF	5
8	Wxp Zs Vp CF	7
9	Wxp CNs WNs CNs CF	8
10	Wxp OWs SNp CF	9
11	Wxp CNs Ts CNs CF	9
12	Wxp Cs GYs BRp CF	9.5
13	Wxp Zs Ts Zs CF	10
14	Wxp Rs Ms BRp CF	11
15	RO's Choice	

## Appendix D – Racing Marks – Names and Positions

### RCYC Racing Marks 2009

SIGNAL	MARK	DESCRIPTION	LAT	LONG
BR	Black Rock	Lit East Cardinal Buoy	50°08.68'N	005°01.74'W
C	Central	Yellow Dihedral	50°07.20'N	005°02.00'W
CA	Castle	Lit Starboard Hand Buoy	50°09.00'N	005°01.65'W
CN	Carricknath	Yellow Spherical buoy	50°08.70'N	005°01.00'W
G	Governor	Lit East Cardinal Buoy	50°09.15'N	005°02.40'W
GY	Gyllyngvase	Yellow Spherical buoy	50°08.30'N	005°03.60'W
HD	Headland	Orange Dihedral buoy	50°08.30'N	005°02.50'W
J	St Just	Red Can (unlit Port hand)	50°10.44'N	005°01.72'W
LL	Long Lodge	Yellow Pole	50°09.19'N	005°00.9'W
M	Maenporth	Yellow Spherical buoy	50°07.50'N	005°04.80'W
N	Nare	White Pole	50°05.36'N	005°04.91'W
NB	North Bank	Lit Port Hand Buoy	50°10.37'N	005°02.13'W
O	Windward mark	Orange buoy	To windward of start line	
OW	Old Wall	Yellow Spherical buoy	50°07.30'N	005°00.10'W
PN	Penarrow	Yellow Spherical Buoy	50°10.32'N	005°02.40'W
P	Pendennis	Yellow Spherical buoy	50°08.75'N	005°02.40'W
R	Rosemullion	White Pole	50°06.55'N	005°03.50'W
SD	St Mawes SC	Orange Buoy - flag D	St. Mawes Harbour	
SN	South Narrows	Yellow Spherical buoy	50°09.30'N	005°01.73'W
T	Trefusis	Yellow Spherical buoy	50°09.63'N	005°03.00'W
V	Vilt	Lit Starboard Hand Buoy	50°09.99'N	005°02.28'W
W	Waterloo	Yellow Spherical buoy	50°09.63'N	005°01.83'W
WN	West Narrows	Lit Port Hand Buoy	50°09.39'N	005°02.07'W
WT	Water Tower	Yellow Spherical buoy	50°10.15'N	005°01.70'W
Y	Windward mark	Orange buoy	To windward of start line	
Z	Zone	Orange Dihedral buoy	50°08.15'N	005°01.10'W

Latitude & longitude positions are approximate and given for guidance only.